

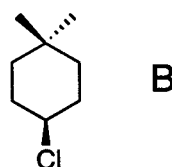
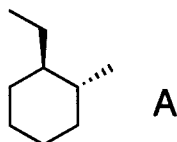
Suggested Answers

NAME

SIGNATURE

Cyclohexane Conformations

Answer the following questions about molecules A and B.

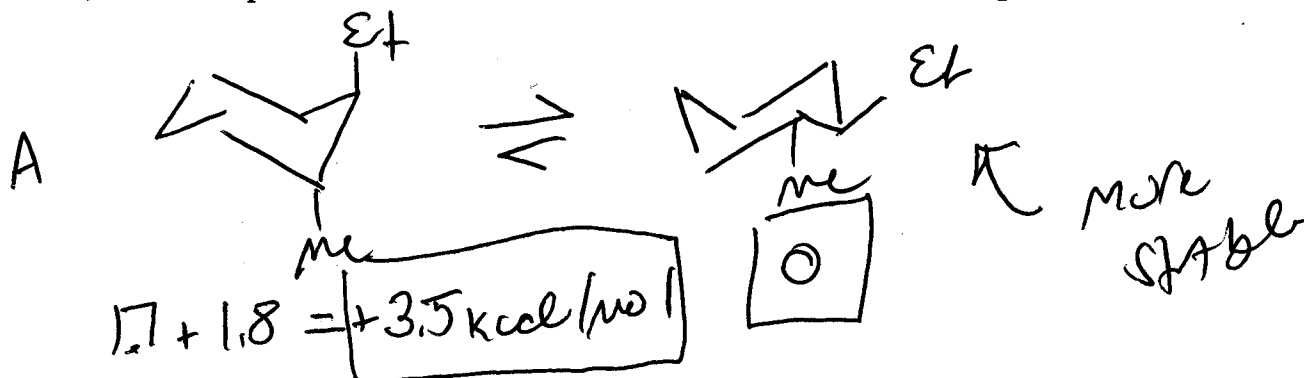


1) Give IUPAC names for **A** and **B**. Be sure to include cis and trans, if needed. (2 points)

A) trans-1-ethyl-2-methylcyclohexane

B) 4-chloro-1,1-dimethylcyclohexane

2) Draw all possible chair conformations of both **A** and **B**. (6 points)



3) Calculate the relative energies of your chair conformations in **A** and **B** by using the ΔG° values in Table 4-3 on page 145 of the text. (2 points)

